

High Voltage switching matrix EXS3200-HV



- ▶ Modular high voltage switching matrix from 4 to 16 channels (modulo 4)
- ▶ 5000 VAC max., 7000 VDC max.
- ▶ Compatible with hipot testers and insulation testers from XS series and MG series
- ▶ RS232 as standard interface, USB (option), dry contact (option)
- ▶ sXspro_EXS software
- ▶ Possible extension >16 channels with additional racks (option)

When you need to do a high voltage test (also called hipot test, dielectric strength test, flash test) and/or measure high resistances (using a megohmmeter, or an insulation tester) on several points of a device under test in production, automatically, THEN our switching matrix IS the solution to improve traceability, to save time, to secure the user operation and optimize the test process.

The EXS3200-HV high Voltage switching matrix from XS series can be organised up to 16 channels per rack (modulo 4), and is generally coupled with a hipot tester and Insulation Tester from the XS or MG series, and can be driven by our sXspro-EXS software

Technical Characteristics

Number of channels

- from 4 to 16 channels max. on a basic rack (EXS3200-HV) per modules of 4 channels each
- possible extension to more than 16 channels, by adding other EXS racks (see ref. EXS3200-EHV)

Channels organisation

- Each channel can be independently driven and switched to one or several other points
- three states are available : high voltage, ground, or floating

Connections

- High voltage connection made from XS series or MG series equipment
- Outputs made on high voltage BNC connectors

Switching specifications

- voltage : 7000 VDC or 5000 VAC max.
- current : 2AC/DC max.

Insulation resistance

> 200 GΩ at 1000 VDC

Relay life

1x10⁶ operations at maximum voltage

Switching times

- 15 ms typical for the closing of 1 channel
- 20 ms max. for the closing of all the channels together
- 15 ms typical for the opening of 1 channel
- < 20 ms max. for the opening of all the channels

RS232 interface

- Speed transmission :
 - 9600 Bauds (fix)
 - Protocol : Full duplex

Protections

Switching matrix through temporised fuse

Operator

Though double safety loop on the Hipot or insulation tester, inhibiting the high voltage generation

General Characteristics

Presentation

- Table top metal case fitted with retractable feet

Dimensions

- Height : 131 mm
- Width : 440.5 mm
- Depth : 450.5 mm

Weight

- Approx. 10 kg

Power

- 230V or 115V +/-15% single phase, 47/63 Hz
- Consumption : 10 VA

Operating temperature

- 0°C to +45°C

Storage temperature

- -10°C to +60°C

Pollution Degree

- Pollution 2

Overload category

- CAT II

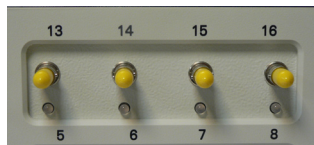
Safety Class

- Class I (earth connection)

Options

MOD-HV4

Module with 4 high voltage channels. 4 modules can be added in one rack

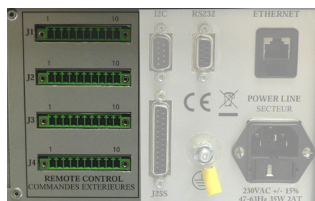


EXS3200-KIT-D

control module that has to be ordered if more than 2 MOD-HV4 are included in 1 basic or extension rack

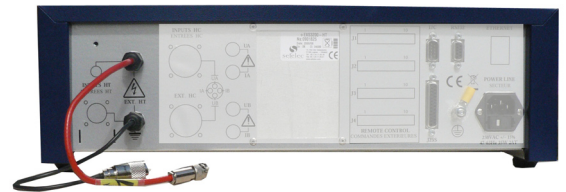
EXS3200-01

Channels direct control through external dry contacts



EXS3200-09

Disconnectable rear panel inputs



EXS3200-EHV

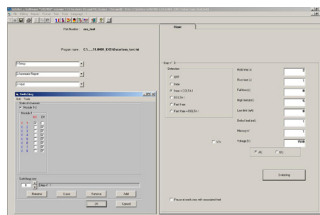
extension 19 inches rack with 4 available modules slots, for maximum 16 channels (the modules have to be ordered apart)



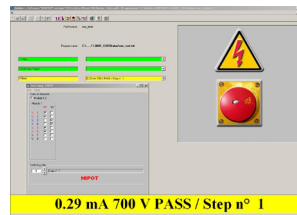
Options

SOFTWARE XS-96-EXS

- Control software for EXS series and the connected hipot tester and/or insulation tester



Example of edit



Example of test

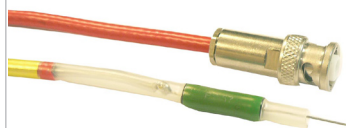
- SXSPRO-EXS is a powerful software controlling the XS series according to your application (Access & Excel results, bar code management, customized test reports, customized user guidance through the test, user level management, production line oriented features, ...)
- SXSPRO-EXS is available in 4 languages (English, French German, Spanish, and can be partly and easily customized to additional languages for user operation)

Available accessories

C0277

High voltage cable for 500 VA units :

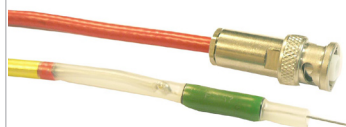
- ▶ Starting : high voltage BNC
- ▶ Ending : high voltage cable without probe for fix connexion ; ends with a protection resistance (120 Ω)
- ▶ Length : 2 meters



C0278

High voltage cable for 50 VA units :

- ▶ Starting : high voltage BNC
- ▶ Ending : high voltage cable without probe for fix connexion ; ends with a protection resistance (4.7 k Ω)
- ▶ Length : 2 meters



C0175

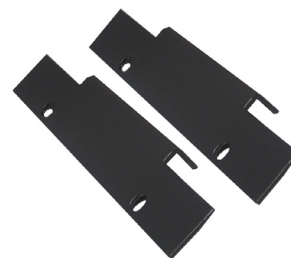
Black ground return lead (does not need to be order with purchase of new instrument)

- ▶ Starting :UHF connector
- ▶ Ending : 4 mm banana plug
- ▶ Length : 2 meters



KRXS

19" rack mounting adaptation



RCP-21

USB / RS232 adapter for software communication

Guide for quotation

- How many switching points ?
- What is the device under test + application (test lab., production line) + drawing of the connection points + test procedure (step 1, step 2, ...), test times ?
- Which tests are necessary (continuity and/or insulation and/or Hipot) ? if ground continuity required : at which current, how many points in continuity?

Example of configuration with 24 high voltage channels made of one basic rack, one extension rack with 6 modules.

High voltage switching matrix with 24 test points

